



CONFÉRENCE UNIVERSITAIRE
DE SUISSE OCCIDENTALE



CUSO Doctoral Program in Microbial Sciences



UNIVERSITÉ DE GENÈVE

FACULTÉ DES SCIENCES

Dep. Biologie végétale, Unité de microbiologie
Unité Microbiologie, ÉCOLOGIE MICROBIENNE
PD Dr. Mauro Tonolla (mauro.tonolla@supsi.ch)

University of Applied Sciences and Arts
of Southern Switzerland

SUPSI

Laboratorio microbiologia applicata
Dip. Ambiente Costruzioni e Design
Via Mirasole 22A, 6500 Bellinzona
Tel. 091 814 60 13 - Fax 091 814 60 39

"MALDI-TOF Mass-spectrometry in medical and environmental microbiology"

Laboratory of applied microbiology, Bellinzona, from the 26th to the 28th August 2015



Day 1 – Wednesday 26 August 2015

14.00 *Welcome and Introduction*

14.00 – 15.30 MALDI-TOF MS Seminars

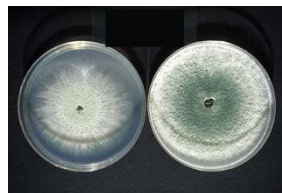
- General introduction and application on bacteria M. Tonolla/G. Vogel
- Identification of filamentous fungi S. De Respini
- Identification of insects V. Pflueger
- Ribosomal protein-based identification V. Pflueger / J. Potier

15.30 – 16.00 *Coffee break*

16.30 – 18.00 Practical work

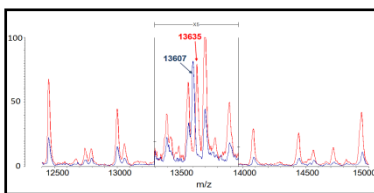
- Sample preparation: bacteria from diagnostics S. De Respini, V. Guidi, V. Pflueger

20.00 *Dinner*



Day 2 – Thursday 27 August 2015

8.00 – 8.30	MALDI-TOF MS Seminar	
	<ul style="list-style-type: none"> Direct identification of <i>Rhizobium</i> in root nodules 	D. Ziegler
8.30 – 12.00	Practical work	
	<ul style="list-style-type: none"> Sample preparation: rhizobia, fungi, mosquito eggs 	D. Ziegler, S. De Respinis, V. Guidi
12.00 – 13.30	<i>Lunch</i>	
13.30 – 14.00	MALDI-TOF MS Seminar	
	<ul style="list-style-type: none"> Identification of proteins with Mascot 	N. Storelli
14.00 – 15.30	Practical work	
	<ul style="list-style-type: none"> Sample preparation: rhizobia, fungi, mosquito eggs 	D. Ziegler, S. De Respinis, V. Guidi
15.30 – 16.00	<i>Coffee break</i>	
16.00 – 18.00	Practical work	
	<ul style="list-style-type: none"> MALDI-TOF MS analysis 	D. Ziegler, S. DeRespinis
20.00	<i>Dinner at Grotto Centena</i>	



Day 3 – Friday 28 August 2015

8.00 – 12.00	Data analysis, preparation of presentations
12.00 – 13.30	<i>Lunch</i>
13.30 – 16.00	Presentation of results and discussion
16.00	<i>Closing</i>

